



Hubbards Lane, Hessett

Sheridans



Hubbards Lane, Hessest IP30 9BG

Guide Price £775,000

An outstanding brand new high specification single storey dwelling, providing stylish living finished to an extremely high standard whilst enjoying a quiet tucked away setting.

Built by the highly regarded builders John Cutmore Builds, the property has been cleverly positioned, allowing a large level of natural light throughout the whole building. The open-plan layout evokes modern family living extending to just under 2000sqft while also maintaining private spaces. Equipped with state-of-the-art materials and technology, the property benefits from underfloor heating via an air-source heating system.

The accommodation currently in brief comprises; entrance door opening to Reception Hall: with window to front, fitted wardrobe, airing and cloak cupboards and door to Cloakroom. Door from hall to Snug/family room: a versatile reception with window to front. Sitting/Dining/Kitchen: an incredible open plan living space, full of light with stylish Bi-Fold doors and French doors opening to terrace and gardens. Window to front and Kitchen area fitted with an extensive range of units, providing plenty of drawer and cupboard space beneath preparation surfaces, whilst complemented by built-in appliances and island. Window to rear and door to Utility: fitted range of units, sink and door to rear.

The master bedroom includes a dressing room and a spacious en-suite shower room and the two remaining double bedrooms are served by a generous family bathroom with shower enclosure, bath, WC and wash basin.

Outside

The property is approached through a pair of timber gates (with power laid for electric gates if desired) opening to a driveway providing plenty of vehicle parking, turning space and access to a double cart-lodge garage with loft storage area above. The gardens are well established and mostly situated to the south and east of the property and bordered by a variety of mature trees and shrubs whilst providing the occupants with an excellent degree of privacy and seclusion. A south facing paved terrace provides a real sun trap and an ideal outdoor area for al-fresco dining and outdoor dining.

Location

The property enjoys a delightful setting set back from a small lane adjacent to open countryside. Hessest is a pretty Suffolk village which is situated just south of the A14, which gives excellent access to Bury St Edmunds, Ipswich, Cambridge and the motorway network beyond. It lies close to the highly regarded villages of Beyton and Thurston, the latter of which offers an excellent range of facilities and also benefitting from a train station. Stowmarket train station is also close providing good links into London.

The village itself provides a fine community spirit and the local Public House, The Five Bells (currently being refurbished). There are good local schools and more comprehensive facilities can be found in Bury St. Edmunds, approximately 10 minutes away in the car.

Directions

When entering Hessest from the direction of Bury St Edmunds,

- Reception hall
- Cloakroom
- Stylish 'live in' kitchen with integrated appliances and island
- Spacious open plan sitting/dining room
- Aluminum Bi-fold doors, under floor heating throughout, carpets included
- Snug/family room, utility
- Principal suite comprising bedroom, dressing room, en-suite shower
- Two further double bedrooms, family bathroom
- Ample parking, double garaging
- Private generous gardens

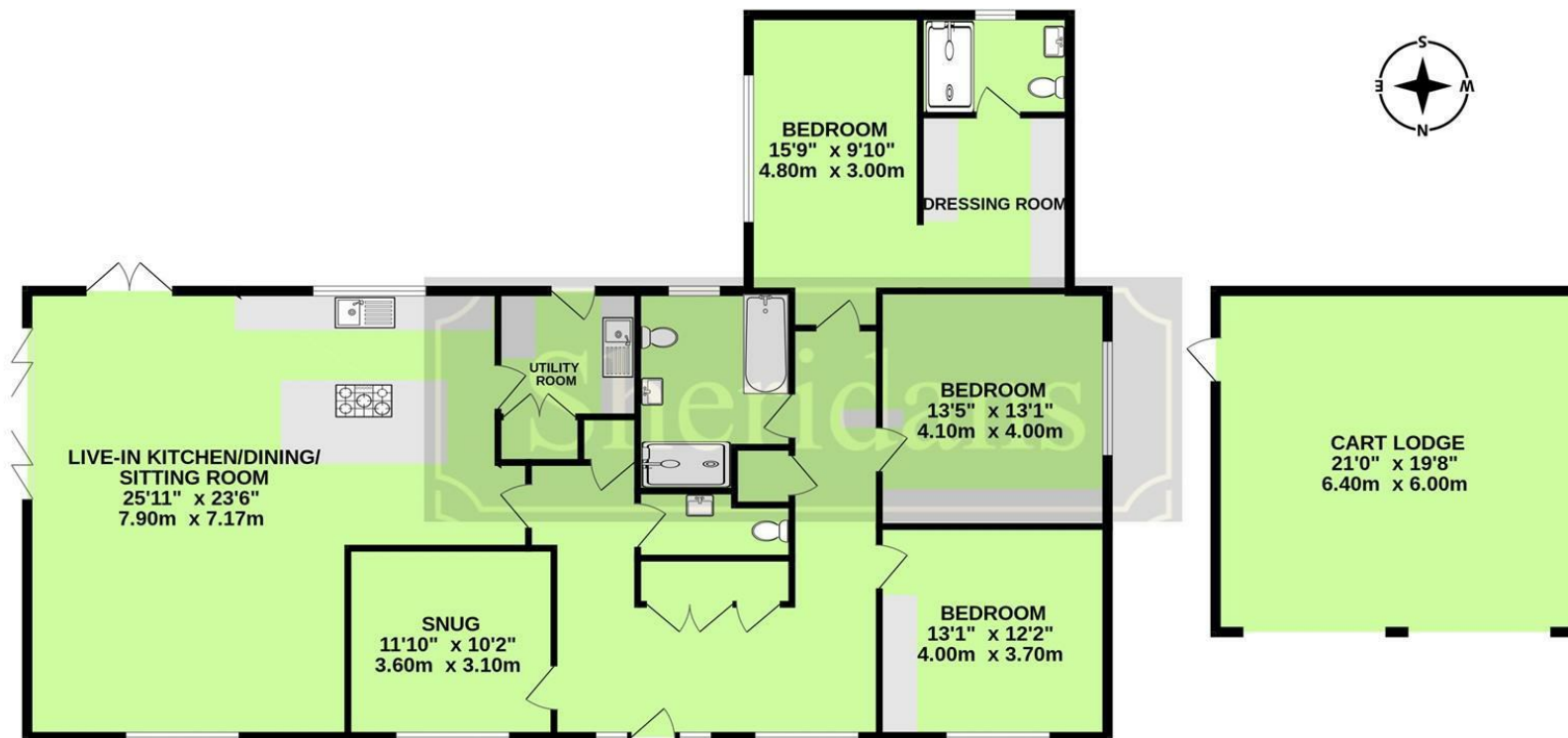
proceed through the village passing the public house, church and village green. Follow the road and turn left into Hubbards Lane, where the entrance to the property will be found immediately on the right.

Services

Mains electricity, water and drainage. Air source under floor heating.

New build.





Whilst every attempt has been made to ensure the accuracy of the floorplan contained here, measurements of doors, windows, rooms and any other items are approximate and no responsibility is taken for any error, omission or mis-statement. This plan is for illustrative purposes only and should be used as such by any prospective purchaser. The services, systems and appliances shown have not been tested and no guarantee as to their operability or efficiency can be given.
Made with Metropix ©2024

These particulars are intended to give a brief description of the property as a guide to prospective buyers. Accordingly, any prospective purchasers should satisfy themselves by inspection or otherwise as to the correctness of any statements or information in these particulars. Please refer to the Agents if you require any further clarification or information.

Sheridans Estate Agents

Bury St. Edmunds Office
19 Langton Place,
Bury St Edmunds, IP33 1NE
Tel: 01284 700 018

Knightsbridge London Office
45 Pont Street,
London, SW1X 0BD
Tel: 020 7629 9966

Registered office: Sheridans Limited, 19 Langton Place, Bury St Edmunds, IP33 1NE

Web: www.sheridans.ltd.uk **Email:** info@sheridans.ltd.uk

Registered in England No. 04461290
VAT Number: 794 915 378



Sheridans